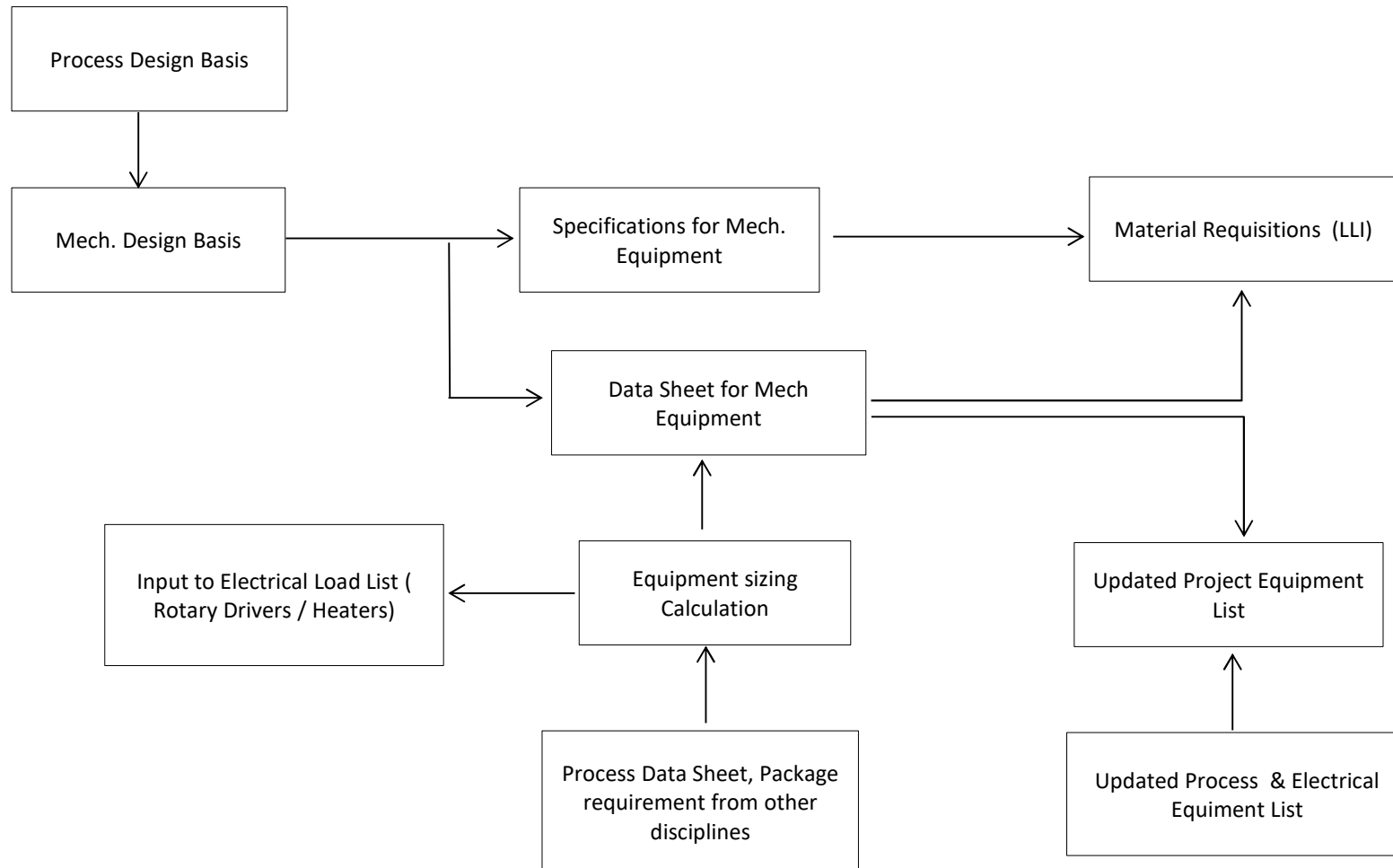
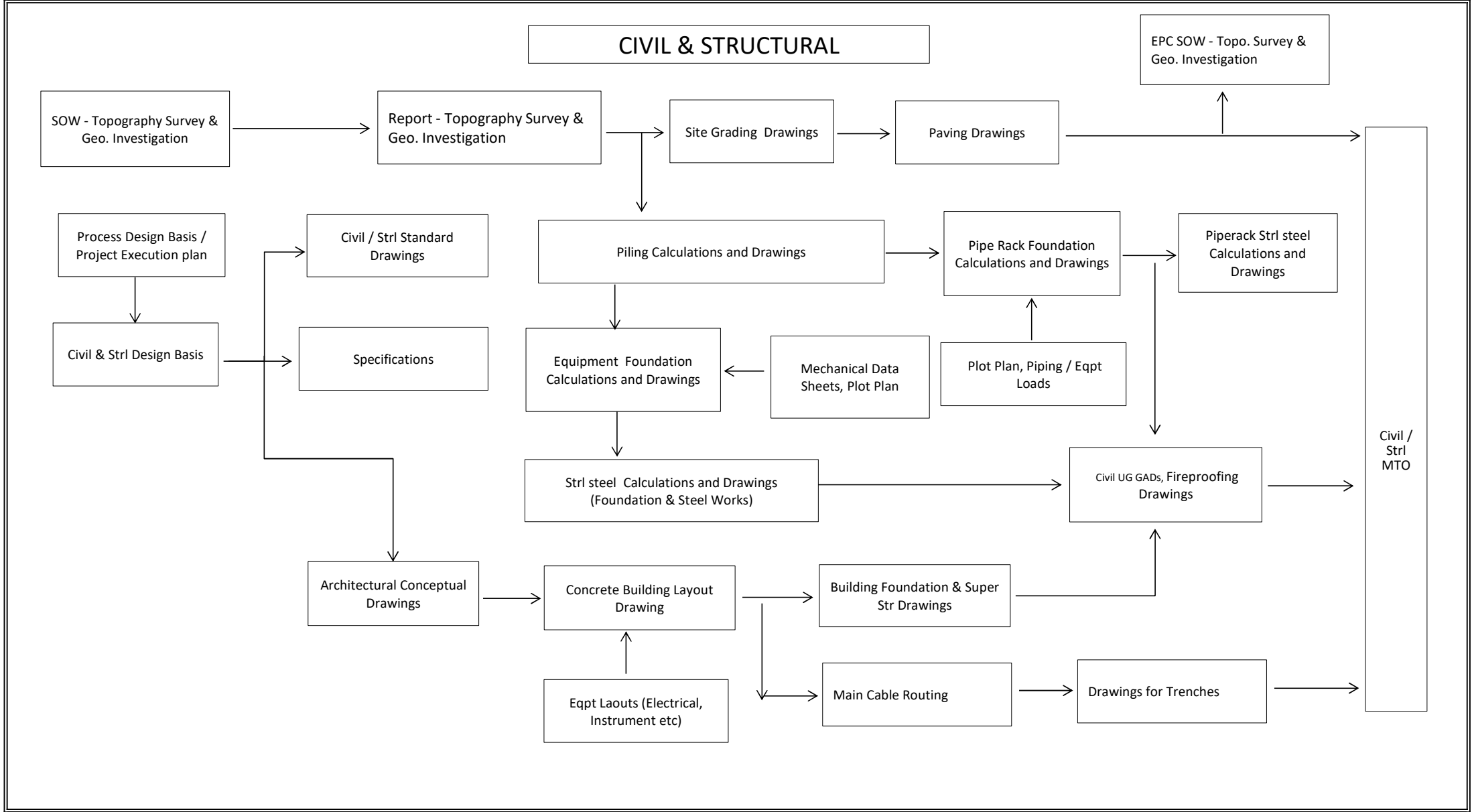
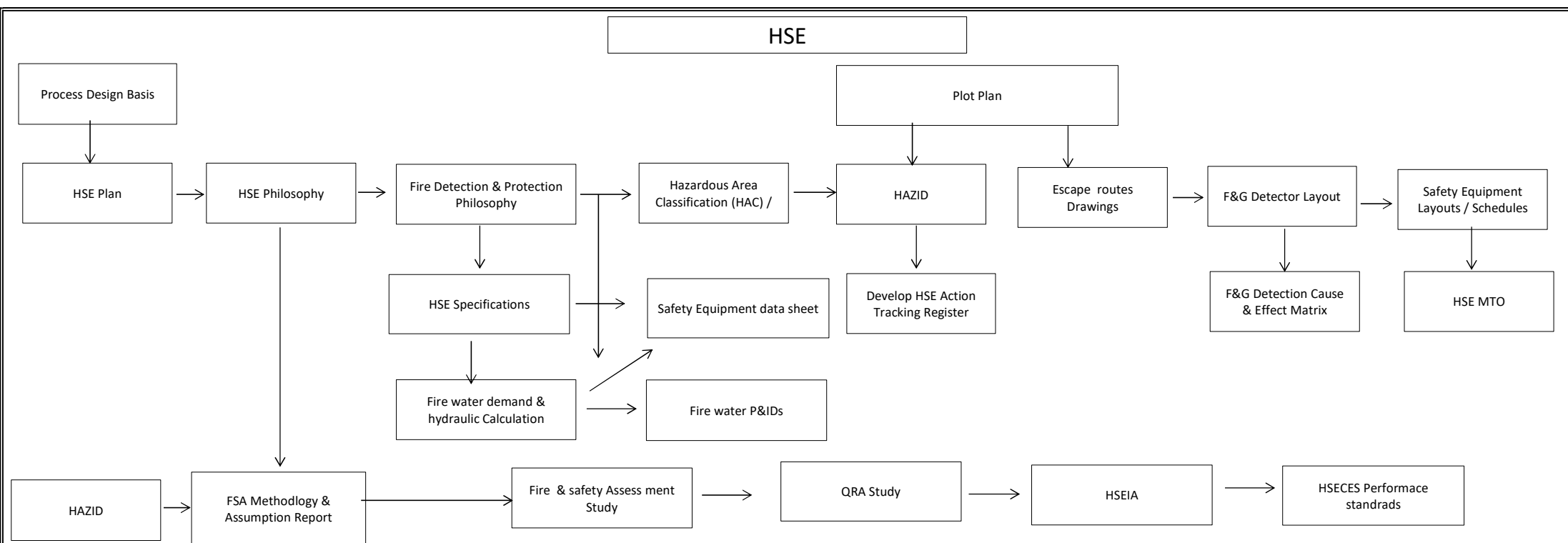


MECHANICAL







TYPICAL HSEIA STUDY (FEED DURATION 8-10 MONTHS):

Sr.	STUDY/ACTIVITY DESCRIPTION	Weeks	Dur for activity	Remarks & Inputs required
	Safety Studies KOM	start	1days	
1	HAZID/ ENVID/ OHRA Workshops	2W*	4 days	Plot plan, PFDs, HSE Philosophy.
2	HAZID/ ENVID/ OHRA Report	3W*	5 days	After HAZID
3	QRA Input / Assumption Register	4W*	5 days	After HAZID
4	QRA Report	9W*	6 weeks	Plot plan, PFDs, PIDs, HMB & FSA Report, Safety layouts etc.
5	QRA / ALARP Workshop including CBA	10W*	1 day	After QRA draft report
6	EIA Scoping Study	6W*	2Weeks	After ENVID
7	Hazards and Effect Register Report	10W*	2Weeks	After HAZID and Bow-Tie workshop and project design basis, specifications.
8	Bow-Tie Workshop	8W*	2 days	After HAZID, HAZOP, SIL.
9	COMAH Report	14W*	4 weeks	After Bow-Tie, QRA, Alarp workshop, Hazards and Effect Register.
10	EIA Report	10W*	4 weeks	Flare radiation and dispersion study report, Equipment specifications
11	OHRA Report	10W*	3 weeks	No specific data required
12	HSEIA Phase 1	16W*	6 weeks	All the above
13	HSECES Performance Standards Report	16W*	6 weeks	All the above

Note : * Weeks after KOM for IFR issue and subsequent issues shall be within 2 weeks after issue of COMPANY comments to SUBCONTRACTOR.

